

# CERTIFICATE OF ANALYSIS

**PRODUCT NAME:** CBD Softgels with Curcumin  
**PRODUCT STRENGTH:** 25 mg CBD / 10 mg Curcumin  
**FILL LOT NUMBER:** 2017601  
**BEST BY DATE:** 12/24/2021  
**SOFTGEL LOT NUMBER:** GC32519-07

**\*Click on the links to view third-party reports\***

## Physical Attributes

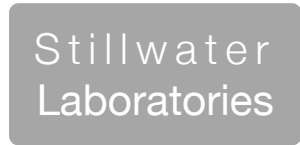
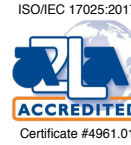
| Test                    | Method  | Specification  | Results |
|-------------------------|---------|--|---------|
| Color                   | SOP-100 | Bright Red to Pink   | PASS    |
| Odor                    | SOP-100 | N/A  | PASS    |
| Appearance              | SOP-100 | Dry, ovoid softgel capsules in container with lid and shrinkband   | PASS    |
| Primary Package Eval.   | SOP-132 | Container clean and free of filth. Container caps tight and shrink band intact                                   | PASS    |
| Secondary Package Eval. | SOP-132 | Labeling Compliance Checked, Cartons sturdy and clean. Sufficient cushion material exists. Box taped and secure. | PASS    |

## Review of Third-Party Analysis

| Panel                                 | Method  | Specification   | Results       | Pass/Fail |
|---------------------------------------|---------|---|---------------|-----------|
| <b>Potency - Total CBD</b>            | SOP-111 | 23.75-31.25 mg CBD<br>LOQ**: 10 PPM† (0.001%)   | <b>29.4mg</b> | PASS      |
| <b>Potency - D9-THC</b>               | SOP-111 | None Detected LOQ: 10 PPM (0.001%)  | <b>ND</b>     | PASS      |
| <b>Compliant Pesticide Panel</b>      | SOP-111 | WIP-100008 : Product specification for Tinctures, Oregon Action limits apply                      | <b>ND</b>     | PASS      |
| <b>Microbial - Stec E.Coli</b>        | SOP-111 | Complies with USP 61/62   | <b>≥LOD</b>   | PASS      |
| <b>Microbial - Salmonella</b>         | SOP-111 | Complies with USP 61/62   | <b>≥LOD</b>   | PASS      |
| <b>Microbial - Yeast/Mold</b>         | SOP-111 | Complies with USP 61/62   | <b>≥LOD</b>   | PASS      |
| <b>CA Compliant Heavy Metal Panel</b> | SOP-111 | Arsenic (As): ≤1.5 PPM<br>Cadmium (Cd): ≤0.5 PPM<br>Mercury (Hg): ≤1.0 PPM<br>Lead (Pb): ≤0.5 PPM | <b>ND</b>     | PASS      |

\* Level of Quantitation, † Parts Per Million

Quality Certified by: Darcie Moran 07/1/2020  
 Darcie Moran Date  
 Manager of Quality Assurance



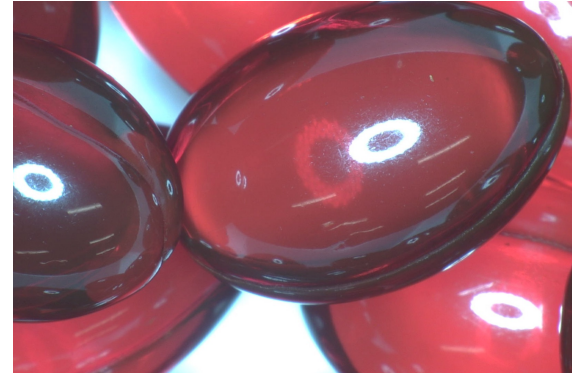
https://portal.a2la.org/scopepdf/4961-01.pdf

Sample Handling

test ID            sample date 6/29/20 5:13 PM  
 order 7680    labID 0FW42    weight 18.4 g  
 source

| Methods    | method       | equipment   |
|------------|--------------|-------------|
| weights    | MSP-7.3.1.3  | AUX120.1    |
| potency    | MSP-7.5.1.5  | LC-2030     |
| terpenes   | MSP-7.5.1.7  | QP2020/HS20 |
| pesticides | MSP-7.5.1.8  | LC-8060     |
| mycotoxins | MSP-7.5.1.8  | LC-8060     |
| microbial  | MSP-7.5.1.9  | Hardy Diag  |
| solvents   | MSP-7.5.1.6  | QP2020/HS20 |
| metals     | MSP-7.5.1.10 | ICPMS2030   |

capsule



| Potency | % | estimated error | Terpenes | % | estimated error | % | estimated error | % | estimated error |
|---------|---|-----------------|----------|---|-----------------|---|-----------------|---|-----------------|
|---------|---|-----------------|----------|---|-----------------|---|-----------------|---|-----------------|

potency  
not tested

terpenes  
not tested / not required

| Solvents | MT limit | 0FW42 | LOQ | Pesticides (MT) | MT limit | 0FW42 | LOQ | Pesticides (other) | 0FW42 | LOQ |
|----------|----------|-------|-----|-----------------|----------|-------|-----|--------------------|-------|-----|
|----------|----------|-------|-----|-----------------|----------|-------|-----|--------------------|-------|-----|

solvents  
not tested / not required

pesticides  
not tested / not required

not tested /  
not required

| Toxic Metals | MT limit | 0FW42 | LOQ |
|--------------|----------|-------|-----|
|--------------|----------|-------|-----|

metals  
not tested / not required

| Microbial      | MT limit  | 0FW42 | LOQ        |
|----------------|-----------|-------|------------|
| <i>E. coli</i> | 10 CFU    | 0 CFU | <10 CFU/g  |
| Salmonella sp. | 10 CFU    | 0 CFU | <10 CFU/g  |
| molds          | 10000 CFU | 0 CFU | <10k CFU/g |

Comments

• All testing was completed onsite at 6073 US93N, Olney MT •• Potency (cannabinoid concentration) is calculated from the equation: [cannabinoid] = [cannabinoid]<sub>HPLC</sub> x volume<sub>dilution</sub> / m<sub>dry</sub>. Terpene concentration is calculated from the equation: [terpene] = (terpene mass)<sub>GCMS</sub> / m<sub>dry</sub>. ••• Decarboxyted cannabinoid concentration is calculated from the equation XXX<sub>total</sub> = 0.877 x XXX<sub>a</sub> + XXX •••• Standards are used to calibrate the resulting data and estimate error using a standard estimate of error method; this is combined with error from weighing and dilution using the propagation of error formula S<sub>g</sub><sup>2</sup> = Σ (∂f/∂i)<sup>2</sup> s<sub>i</sub><sup>2</sup> where i is the contributor to error. The 95% confidence range is calculated from the equation: (concentration) ± t<sub>CL90</sub> x S<sub>g</sub>. Sampling error is not

Certified by:

Kyle Larson, MSc (Biology)  
 Deputy Director  
 6073 US93N, Olney MT 59927  
 406-881-2019 rdb@stwlabs.com

Printed 7/2/2020 1:16 PM